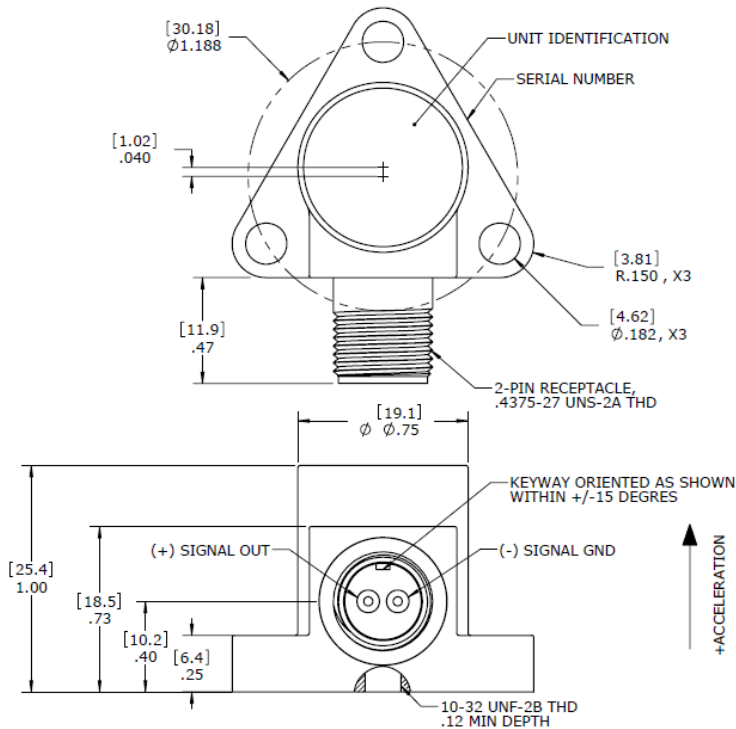




DIMENSIONS



MODEL 7550A ACCELEROMETER

SPECIFICATIONS

- High Temperature PE Accelerometer
- 20pC/g and 50pC/g Sensitivity
- +300°C Operating Range
- Exceptional Thermal Performance

The Model 7550A is a high temperature piezoelectric charge mode accelerometer designed for long term health usage monitoring on turbine engines. The accelerometer incorporates an annular shear mode crystal that provides stable thermal response up to +300°C with output sensitivity options of 20pC/g & 50pC/g. The model 7550A is hermetically sealed and features the ARINC three hole mounting configuration.

FEATURES

- 20pC/g to 50pC/g Sensitivity
- Wide bandwidth up to 12kHz
- Case Isolated, Internally Shielded
- Annular Shear Mode
- ARINC Three Hole Mount
- Hermetically Sealed

APPLICATIONS

- Land Gas Turbines
- Power Plants
- Aircraft Engines
- Industrial Applications
- High Temperature Testing

PERFORMANCE SPECIFICATIONS

All values are typical at +24°C, 80Hz unless otherwise stated. Measurement Specialties reserves the right to update and change these specifications without notice.

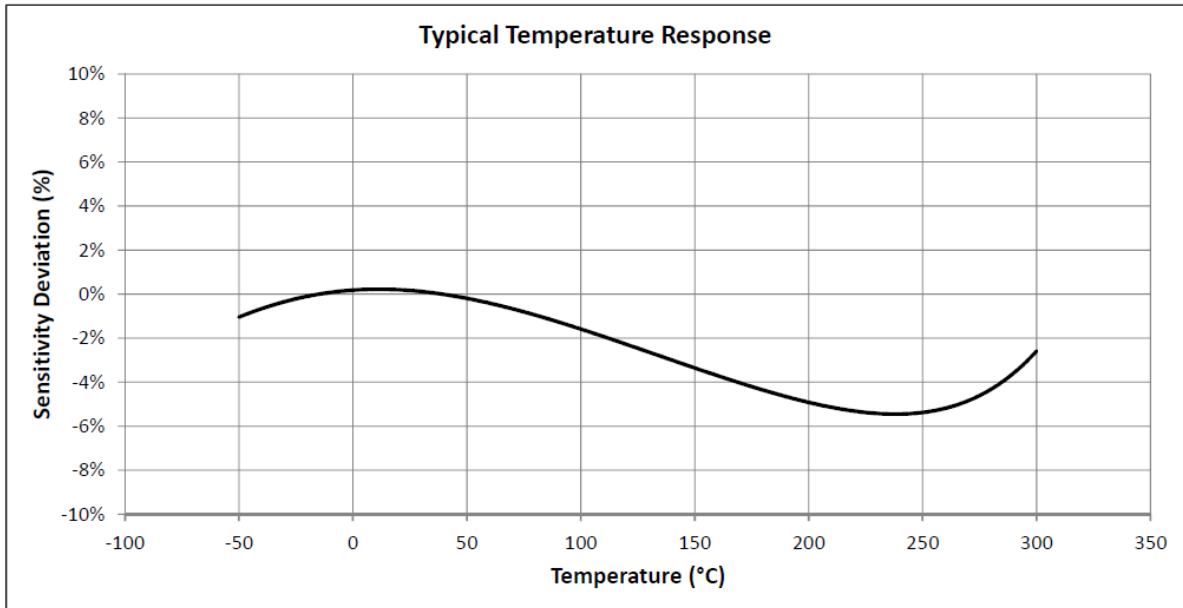
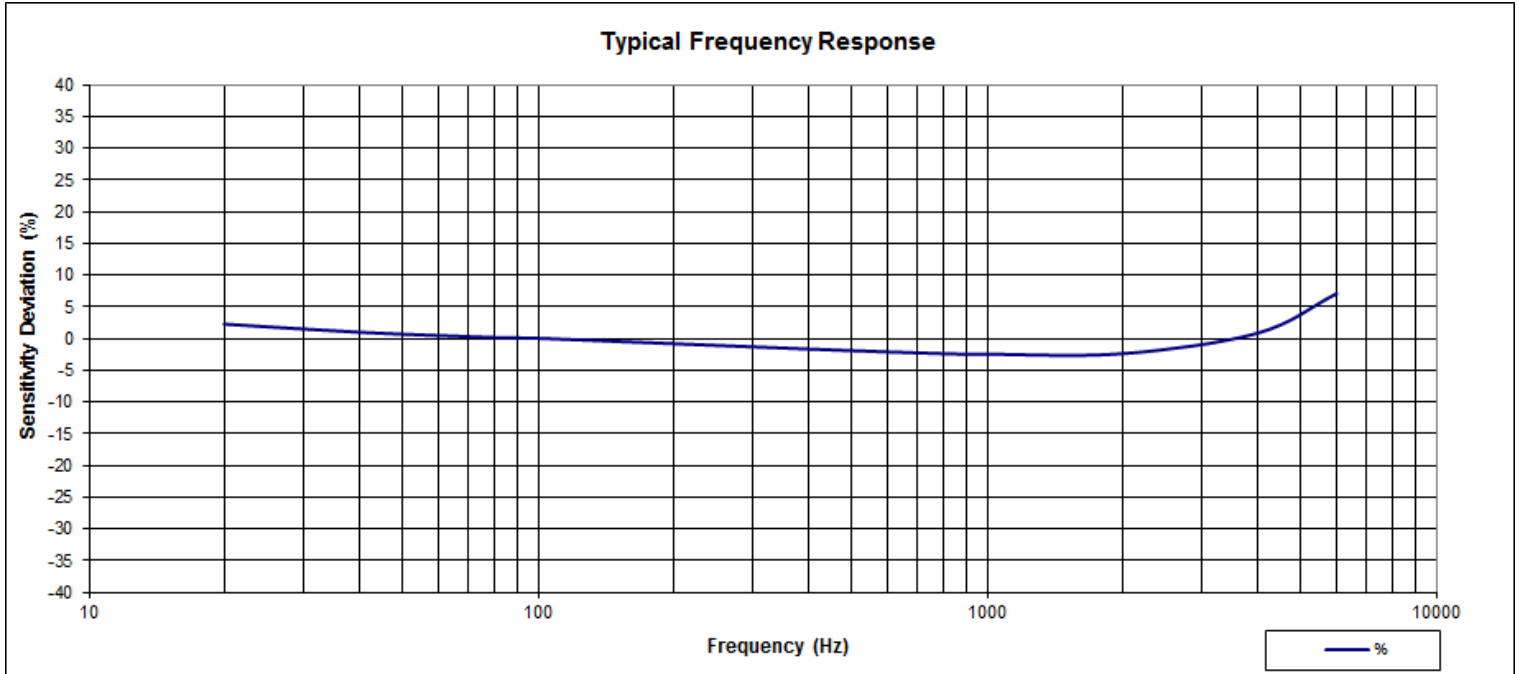
Parameters			Notes
DYNAMIC			
Dash Number	-50	-20	
Sensitivity (pC/g)	50	20	Typical
Sensitivity (pC/g)	40	14.5	Minimum
Frequency Response (Hz) ²	0.5-6000	0.5-9000	±10%
Frequency Response (Hz) ²	0.1-9000	0.1-12000	±2dB
Natural Frequency (Hz)	26000	30000	
Non-Linearity (%FSO)	±1/1000g	±1/1000g	
Transverse Sensitivity (%)	<5	<5	
Dynamic Range (g) ¹	±500	±1250	
Shock Limit (g)	5000	5000	
ELECTRICAL			
Capacitance (pF)	1050		Nominal
Insulation Resistance (MΩ)	>100		@100Vdc
Grounding	Case Isolated, Internally Shielded		
ENVIRONMENTAL			
Temperature Response (%)	See Typical Temperature Response Curve		
Operating Temperature (°C)	-54 to +300		
Storage Temperature (°C)	-54 to +300		
Humidity	Hermetically Sealed, IP67		
PHYSICAL			
Sensing Element	Ceramic (shear mode)		
Case Material	Stainless Steel		
Electrical Connector	2-Pin Receptacle, 7/16-27 UNS Thread		
Weight (grams)	72		
Mounting	3x #8-32 Socket Head Cap Screw		
Mounting Torque	18 lb-in (2.0 N-m)		

¹ Operating range over which the accelerometer meets the linearity specifications

² Low-end response of the accelerometer is a function of its associated electronics.

Calibration supplied:	CS-FREQ-0100	NIST Traceable Amplitude Calibration from 20Hz to ±2dB Frequency Response Limit
Supplied accessories:	AC-A05080	3x #8-32 (1/2" length) Socket Head Cap Screw
Optional accessories:	326-XXX 161A	Mating Cable Assembly (XXX designates length in inches, 10ft standard), Rated to +260°C 4-Channel PE & IEPE Signal Conditioner

The information in this sheet has been carefully reviewed and is believed to be accurate; however, no responsibility is assumed for inaccuracies. Furthermore, this information does not convey to the purchaser of such devices any license under the patent rights to the manufacturer. Measurement Specialties, Inc. reserves the right to make changes without further notice to any product herein. Measurement Specialties, Inc. makes no warranty, representation or guarantee regarding the suitability of its product for any particular purpose, nor does Measurement Specialties, Inc. assume any liability arising out of the application or use of any product or circuit and specifically disclaims any and all liability, including without limitation consequential or incidental damages. Typical parameters can and do vary in different applications. All operating parameters must be validated for each customer application by customer's technical experts. Measurement Specialties, Inc. does not convey any license under its patent rights nor the rights of others.



ORDERING INFORMATION

PART NUMBERING Model Number+Sensitivity

7550A-GG
|
| _____ Sensitivity (50 is 50pC/g)

Example: 7550A-50
 Model 7550A, 50pC/g

NORTH AMERICA

Measurement Specialties, Inc.,
a TE Connectivity Company
1000 Lucas Way
Hampton, VA 23666
Sales and Customer Service
Tel: +1-800-745-8008 or
+1-757-766-1500
Fax: +1-757-766-4297
t&m@meas-spec.com

EUROPE

MEAS France SAS
a TE Connectivity Company
26 Rue des Dames
F78340 Les Clayes-sous-Bois
France
Sales and Customer Service
Tel: +33 (0) 1 79 33 00
Fax: +33(0)1 34 81 03 59
t&m@meas-spec.com

ASIA

Measurement Specialties (China), Ltd.,
a TE Connectivity Company
No. 26 Langshan Road
Shenzhen High-Tech Park (North)
Nanshan District, Shenzhen 518057
China
Sales and Customer Service
Tel: +86 755 3330 5088
Fax: +86 755 3330 5099
t&m@meas-spec.com

TE.com/sensorsolutions

Measurement Specialties, Inc., a TE Connectivity company.

Measurement Specialties, TE Connectivity, TE Connectivity (logo) and EVERY CONNECTION COUNTS are trademarks. All other logos, products and/or company names referred to herein might be trademarks of their respective owners.

The information given herein, including drawings, illustrations and schematics which are intended for illustration purposes only, is believed to be reliable. However, TE Connectivity makes no warranties as to its accuracy or completeness and disclaims any liability in connection with its use. TE Connectivity's obligations shall only be as set forth in TE Connectivity's Standard Terms and Conditions of Sale for this product and in no case will TE Connectivity be liable for any incidental, indirect or consequential damages arising out of the sale, resale, use or misuse of the product. Users of TE Connectivity products should make their own evaluation to determine the suitability of each such product for the specific application.

© 2015 TE Connectivity Ltd. family of companies All Rights Reserved.