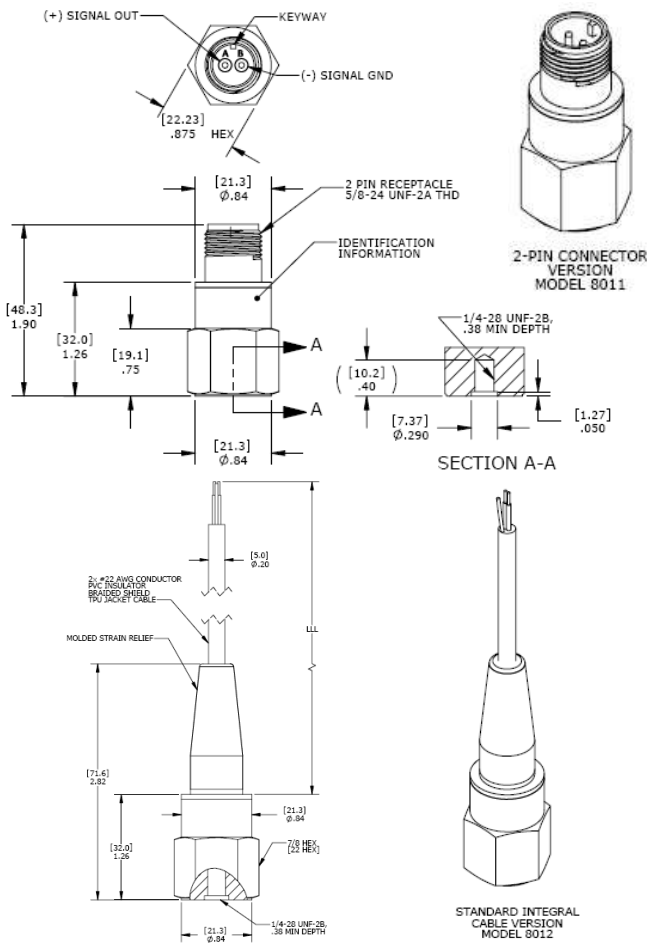




DIMENSIONS



MODEL 801X-VR/-VP VELOCITY TRANSMITTER

SPECIFICATIONS

- 4-20mA Loop Power
- True RMS or Peak Output
- -40°C to +85°C Operating Range
- Top Exit Connector or Integral Cable

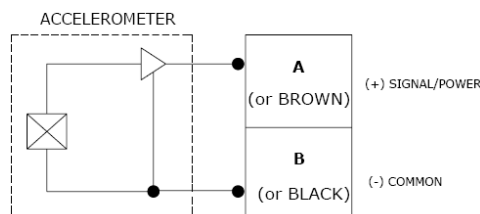
The Model 8011 & 8012 are internally shielded rugged 4-20mA velocity transmitters. The transmitters are available in ranges from 0.5 to 5.0 in/sec, in either RMS or Peak velocity output options. The model 8011 features a top exit MIL-C-5015 connector while the model 8012 features an integral cable. The units are hermetically sealed and are designed for operating in temperature ranges from -40°C to +85°C.

FEATURES

- 0.5 to 5.0 in/sec Dynamic Range
- 3-1000Hz Bandwidth
- Case Isolated, Internally Shielded
- Hermetically Sealed, Welded
- Annular Shear Mode
- Reverse Wiring Protection
- 2-Pin MIL-C-5015 Connector

APPLICATIONS

- General Purpose
- Machine Monitoring
- Industrial Applications
- Harsh Environments
- Gearbox Monitoring



PERFORMANCE SPECIFICATIONS

All values are typical at +24°C, 100Hz and 15Vdc excitation unless otherwise stated. Measurement Specialties reserves the right to update and change these specifications without notice. Standard product parameters are described in PSC-1003 for Plug & Play AC Accelerometers.

Parameters

DYNAMIC

	0-0.5	0-1.00	0-2.00	0-3.00	0-5.00	Notes
Measurement Range (in/sec)	0-0.5	0-1.00	0-2.00	0-3.00	0-5.00	
Measurement Range (mm/sec)	0-12.7	0-25.4	0-50.8	0-76.2	0-127	
Output (mA)	4-20	4-20	4-20	4-20	4-20	
Frequency Response (cpm)	180-60000	180-60000	180-60000	180-60000	180-60000	±10%
Frequency Response (Hz)	3-1000	3-1000	3-1000	3-1000	3-1000	±10%
Non-Linearity (%FSO)	±1					
Transverse Sensitivity (%)	<5					
Shock Limit (g)	5000					

ELECTRICAL

Excitation Voltage (Vdc)	12 to 30					
Loop Resistance (Ohms)	900 max					See Note 1
Turn on Time (sec)	<15					
Grounding	Case Isolated, Internally Shielded					

ENVIRONMENTAL

Operating Temperature (°C)	-40 to +85
Storage Temperature (°C)	-40 to +85

PHYSICAL

Sensing Element	Ceramic (shear mode)
Case Material	Stainless Steel
Weight (grams)	93
Mounting Torque	24 lb-in (2.7 N-m)

Calibration supplied:	CS-FREQ-0100	NIST Traceable Amplitude Calibration from 20Hz to ±10% Frequency Response Limit
Supplied accessories:	AC-A03663	¼-28 to ¼-28 mounting stud
Optional accessories:	316-XXX	Cable Assembly, Straight (XXX designates length in inches, 10ft standard)
	318-XXX	Cable Assembly, 90 Degrees (XXX designates length in inches, 10ft standard)
	AC-D03664	¼-28 to M5 mounting stud
	AC-D03665	¼-28 to M6 mounting stud
	AC-A04209	Magnetic Mounting Adaptor
	AC-D04210	Adhesive Mounting Adaptor

Note 1

Maximum Loop Resistance = (Excitation Voltage – 12Vdc) / 20mA

The information in this sheet has been carefully reviewed and is believed to be accurate; however, no responsibility is assumed for inaccuracies. Furthermore, this information does not convey to the purchaser of such devices any license under the patent rights to the manufacturer. Measurement Specialties, Inc. reserves the right to make changes without further notice to any product herein. Measurement Specialties, Inc. makes no warranty, representation or guarantee regarding the suitability of its product for any particular purpose, nor does Measurement Specialties, Inc. assume any liability arising out of the application or use of any product or circuit and specifically disclaims any and all liability, including without limitation consequential or incidental damages. Typical parameters can and do vary in different applications. All operating parameters must be validated for each customer application by customer's technical experts. Measurement Specialties, Inc. does not convey any license under its patent rights nor the rights of others.

ORDERING INFORMATION

PART NUMBERING

801X-ZZ-GG-CCC

				Cable length (120 is 120 inches)
				Dynamic Range (05 is 0-0.5 in/sec)
				Range Type (VR is RMS Velocity)
				Electrical Connection Option (1 for 2-pin connector, 2 for integral cable)

-ZZ
 VR = RMS
 VP = Peak

-GG
 05 = 0-0.5 in/sec (0-12.7 mm/sec)
 10 = 0-1.0 in/sec (0-25.4 mm/sec)
 20 = 0-2.0 in/sec (0-50.8 mm/sec)
 30 = 0-3.0 in/sec (0-76.2 mm/sec)
 50 = 0-5.0 in/sec (0-127 mm/sec)

Example: 8011-VR-10
 Model 8011, 2-pin connector, RMS velocity output, 0-1.0 in/sec

NORTH AMERICA

Measurement Specialties, Inc.,
 a TE Connectivity Company
 1000 Lucas Way
 Hampton, VA 23666
 USA
 Tel: +1-800-745-8008 or
 +1-757-766-1500
 Fax: +1-757-766-4297
 Sales: pvg.cs.amer@meas-spec.com

EUROPE

MEAS France SAS
 a TE Connectivity Company
 26 Rue des Dames
 F78340 Les Clayes-sous-Bois
 France
 Tel: +33 (0) 130 79 33 00
 Fax: +33(0) 134 81 03 59
 Sales: pfg.cs.emea@meas-spec.com

ASIA

Measurement Specialties (China), Ltd.,
 a TE Connectivity Company
 No. 26 Langshan Road
 Shenzhen High-Tech Park (North)
 Nanshan District, Shenzhen 518057
 China
 Tel: +86 755 3330 5088
 Fax: +86 755 3330 5099
 Sales: pfg.cs.asia@meas-spec.com

TE.com/sensorsolutions

Measurement Specialties, Inc., a TE Connectivity company.

Measurement Specialties, TE Connectivity, TE Connectivity (logo) and EVERY CONNECTION COUNTS are trademarks. All other logos, products and/or company names referred to herein might be trademarks of their respective owners.

The information given herein, including drawings, illustrations and schematics which are intended for illustration purposes only, is believed to be reliable. However, TE Connectivity makes no warranties as to its accuracy or completeness and disclaims any liability in connection with its use. TE Connectivity's obligations shall only be as set forth in TE Connectivity's Standard Terms and Conditions of Sale for this product and in no case will TE Connectivity be liable for any incidental, indirect or consequential damages arising out of the sale, resale, use or misuse of the product. Users of TE Connectivity products should make their own evaluation to determine the suitability of each such product for the specific application.

© 2015 TE Connectivity Ltd. family of companies All Rights Reserved.